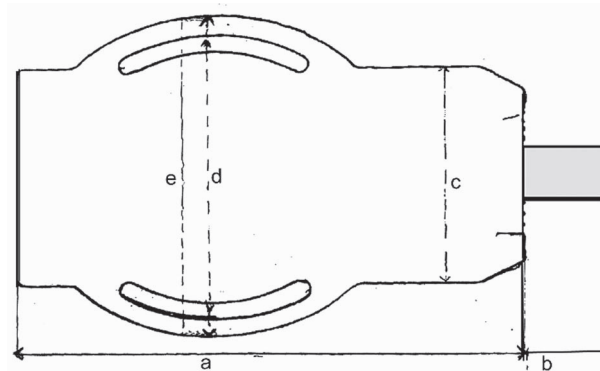
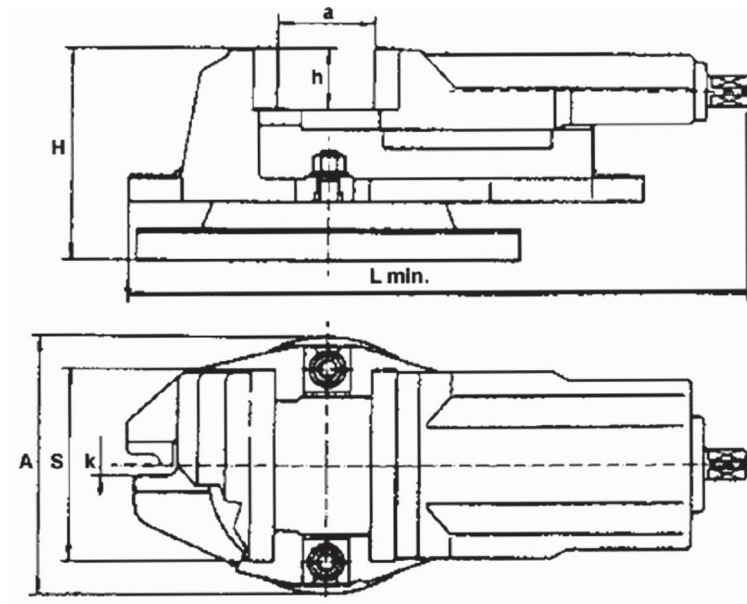


**TABELLA TECNICA DELLE DIMENSIONI ARTICOLO 2868E**
**Tabella N. 20**


ARTICOLO SICUTOOL		2868E 80	2868E 100	2868E120	2868E 150
<b>DIMENSIONI</b>					
a	mm	180	240	300	350
b	mm	95	100	110	115
c	mm	97	130	150	180
d	mm	132	170	210	230
e	mm	155	200	230	255
H spessore morsa	mm	52	65	83	97

La misura "b" si intende a morsa chiusa

**TABELLA TECNICA DELLE DIMENSIONI ARTICOLO 2872G**
**Tabella N. 21**


ARTICOLO SICUTOOL		2872G 100	2872G 125	2872G 160
<b>DIMENSIONI</b>				
S	mm	280	340	410
A	mm	95	105	120
H	mm	110	130	160
L	mm	120	155	180
a max	mm	80	100	125
h	mm	32	40	50
k	mm	14	14	18
Forza di serraggio	daN	2500	3500	4000
Peso	kg	10	17	41